



Sea-Tac International Airport International Arrivals Facility Program

First Half 2019 Update

AGENDA: Port and Clark

- Port Presentation
 - Program Elements Overview
 - Dashboard Indicators
 - Budget
 - Schedule
 - S/M/WBE
 - Challenges & Action Taken
 - Accomplishments, Progress, & Photos – Landside and Airside
 - Recognitions
- Clark Presentation

Executive Summary In Pictures



Program Elements Overview



Existing SSAT Corridor Updates



Future Pedestrian Walkway



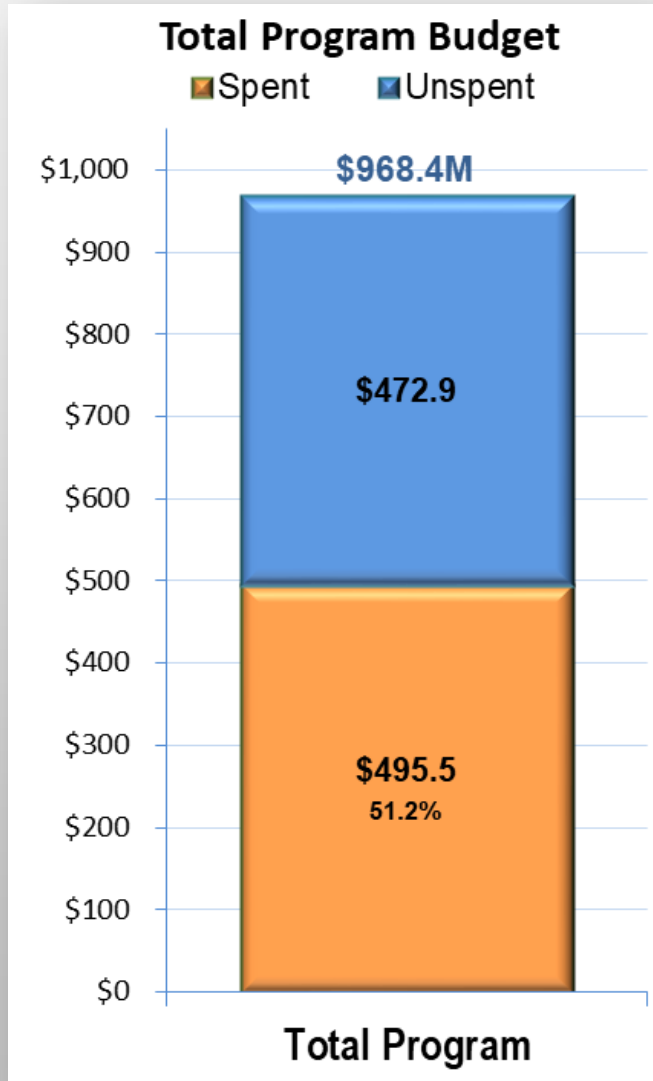
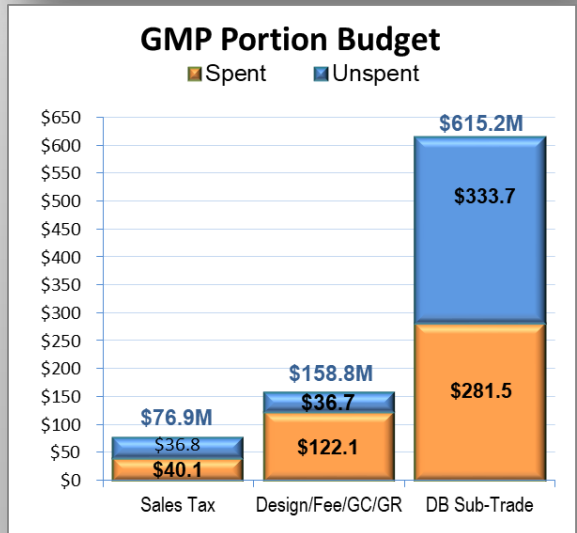
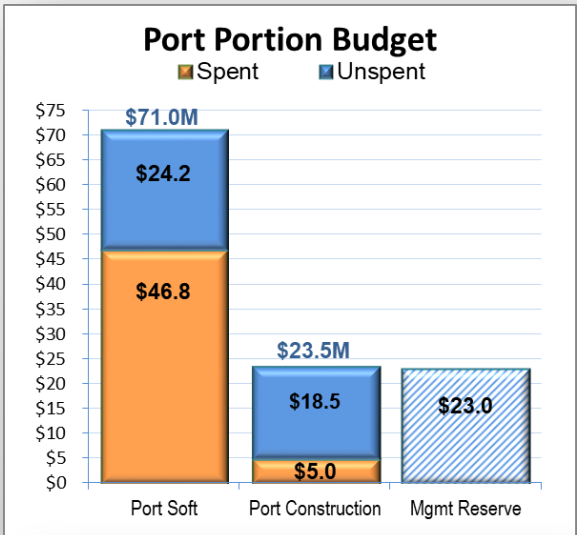
Concourse A Sterile Corridor



Landside Building

The IAF Program has 4 major elements

DASHBOARD INDICATORS: PROGRAM COST PROGRESS OVERVIEW



Executive Summary:

- On target to complete in budget
- No management reserve used yet (consider CBP added scope)
- Contingency levels are positive, however negotiations continue

● On-Target *Within Budget (excl. MR)*
● On-Watch *Use of Mgmt Reserve*
● Action is Necessary *F/C to Exceed Budget*

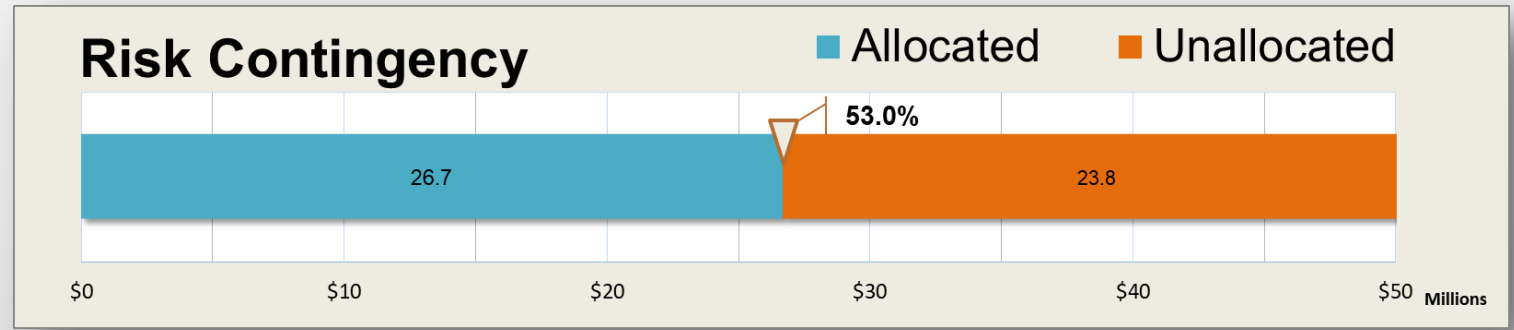
(3/31/19)

CONTINGENCY ALLOWANCE & GMP ALLOWANCE STATUS



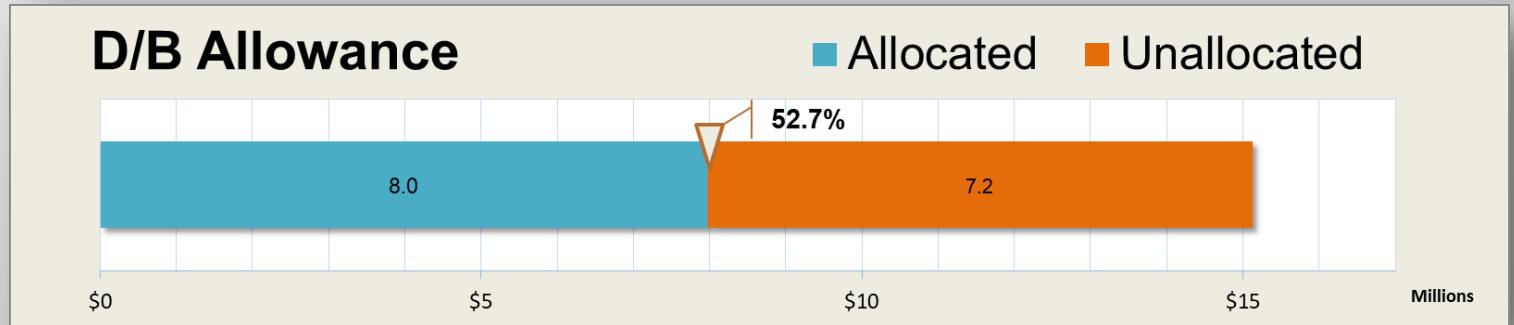
Example:

- Premium time



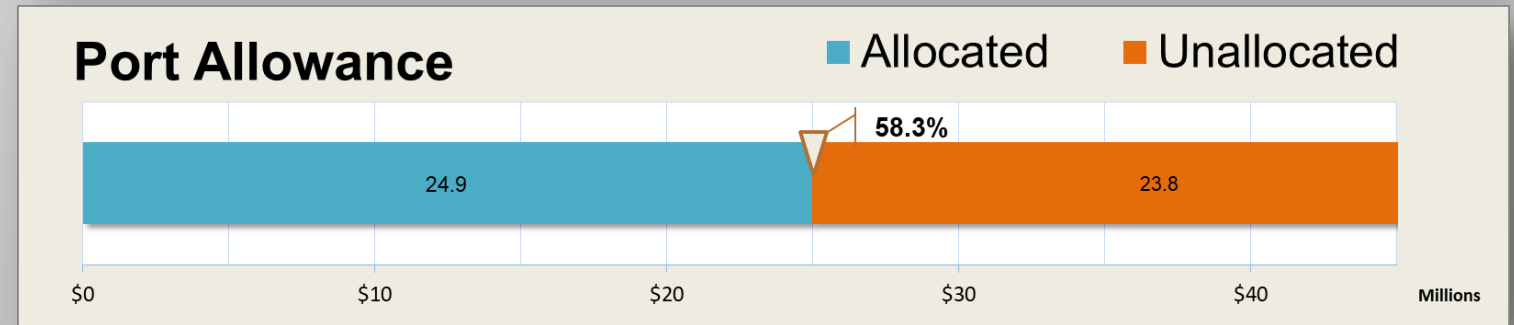
Example:

- Glass wall at TSA checkpoint



Example:

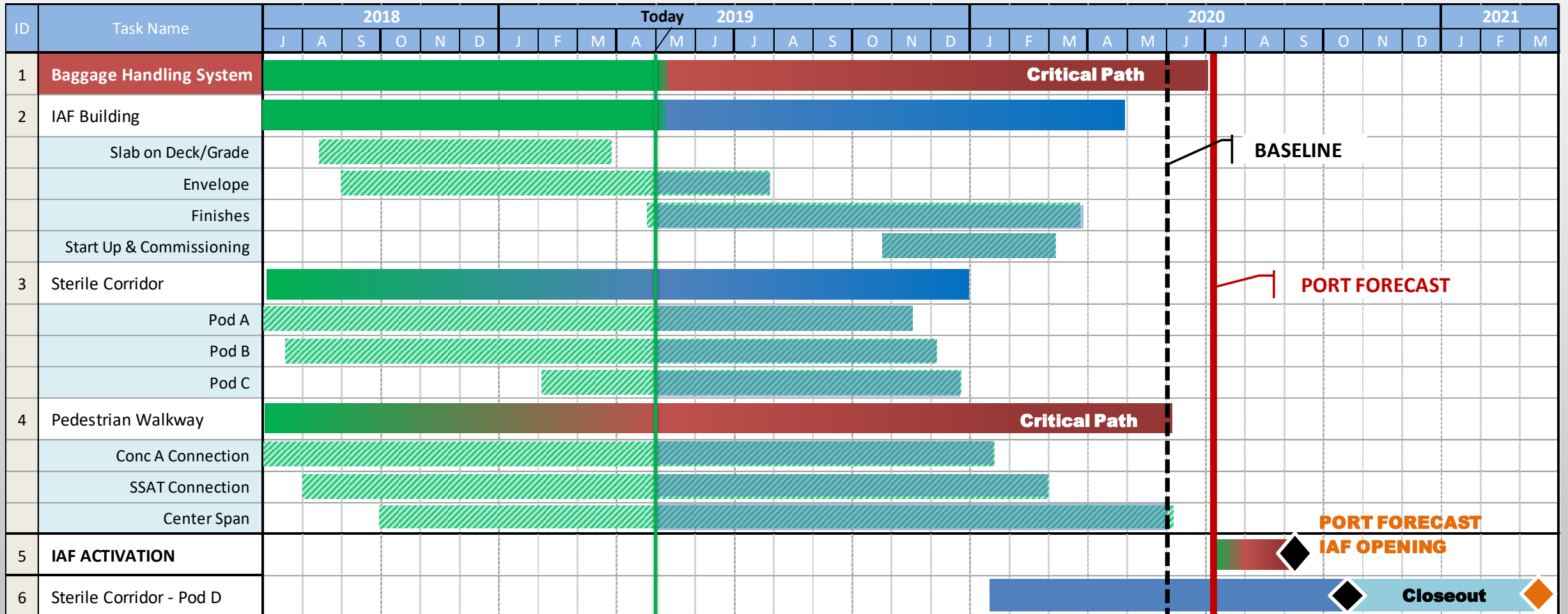
- Underground utilities for custodial can wash



● On-Target *Within GMP Budget*
● On-Watch *F/C use <50% Mgmt Rsv*
● Action is Necessary *F/C use >50% Mgmt Rsv*

(3/31/2019)

SCHEDULE *(April 2019 Progress Update)*



IAF Substantial Completion

- On-Target
0 Days +
- On-Watch
0 to -10 days
- Action is Necessary
-11 days or more

CHALLENGE FOCUS AREAS and ACTIONS

- **Steel delivery** – met with Supplier and Monitoring Fab Shops
- **Baggage Handling System** – met with DCI, Delta, Siemens Peer Review
- **Federal agency coordination** – partner workshops and design ideas
- Mechanical and electrical installation – Partnering and negotiating
- Special Systems (Door & Camera & IT Rooms) – Detailed Responsibility Matrix
- Terrazzo – gained approval, Clark evaluating phasing area sizes
- Finishes (Painting Wallboard Trim) – Clark evaluating trade phasing
- Time-In-System design issues – Make items visible
- Badging – Make list visible and proactive with subs and CBP
- Risk Register – work with Clark to ensure we think ahead

OTHER ACTIONS TAKEN

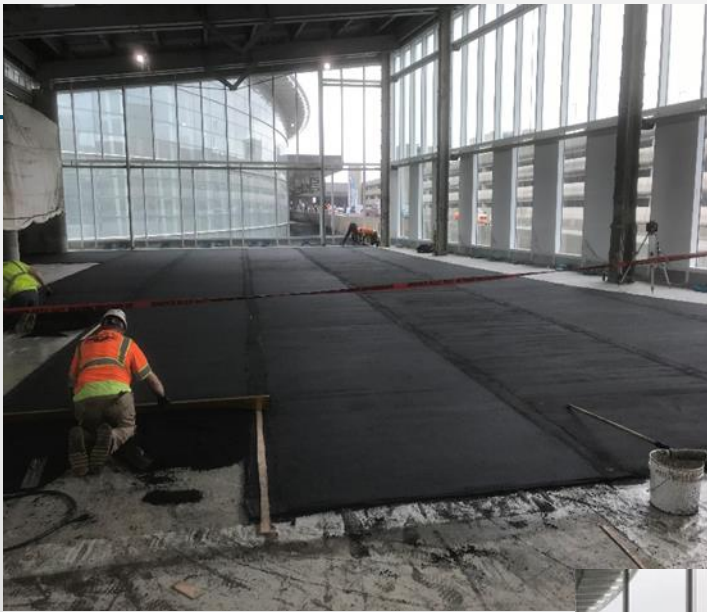
- **CBP Partnering & Workshops**
- Team: Partnering continues, DRB coordination continues
 - Verbal first, no surprises
 - **Clark Senior Management attention**
 - Team additions/actions by Port and Clark
 - Larger weekly management meetings
 - **Celebrations, etc.**
- **Independent Bridge Safety Team Review**
- Transparency
- Pencils down
- Faster decisions – “paper to follow”
- Renewed Risk Register
- Added fab shops
- Scope Reduction
- Airline Partnering & Peer Review

CBP Workshops

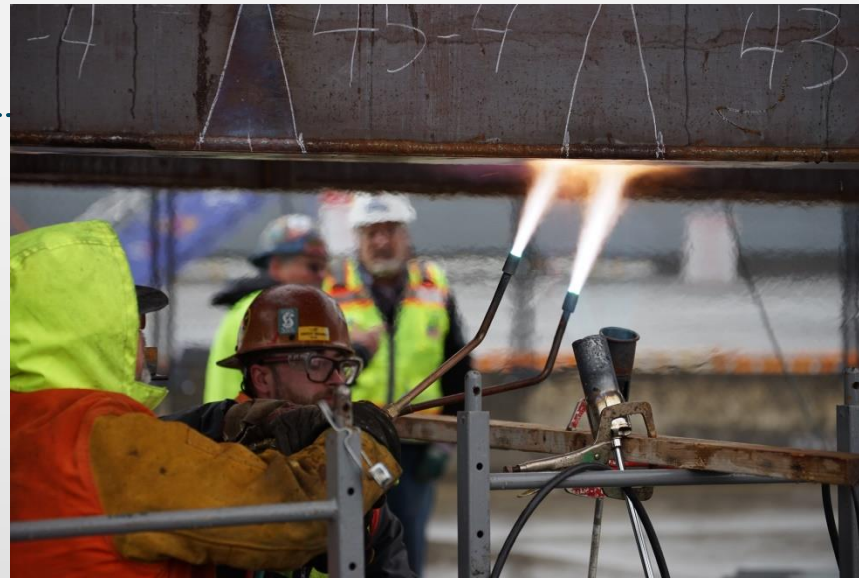


2019 Q1 & Q2 Update

- Main IAF Roof Complete
- In-place terrazzo mockup approved, work underway
- Two Facial Recognition Workshops with CBP
- Pod C Underground Utilities and Foundation Complete
- BHS installation underway
- Partnership with Delta, Alaska & Foreign Carriers
- Pedestrian Walkway Center Span Steel Erection Complete- turnover to follow on trades
- Gate 10 returned to service, Gate 11 & 12 Captured for construction
- BHS CBRA Area Equipment Installation nearly complete
- BHS design approved by TSA
- PW Core Structures Complete





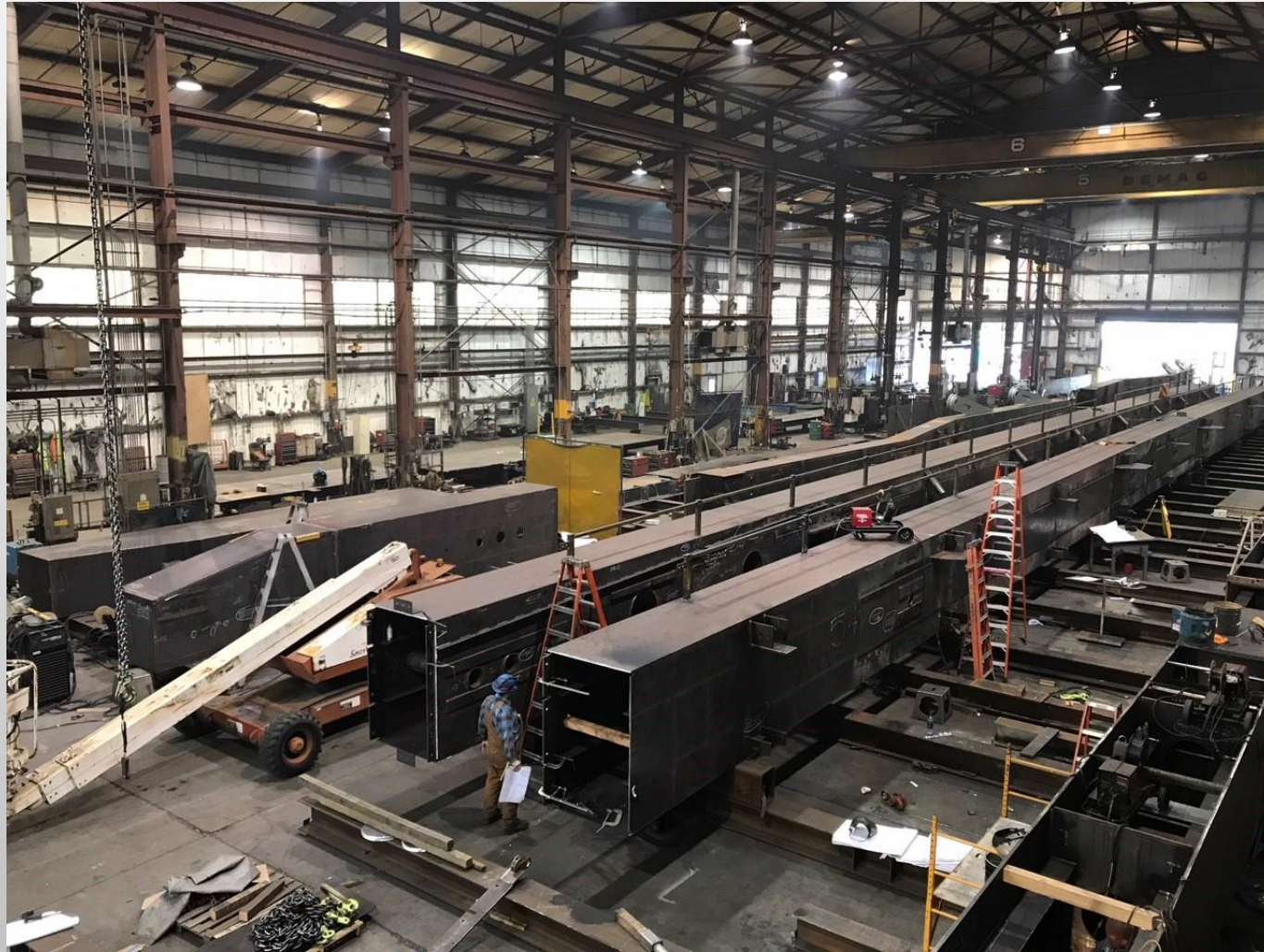




ACCOMPLISHMENT: Pedestrian Walkway Support Core Topping Out and Framing



STEEL FABRICATION



PROGRESS IN MOTION



Jesse Co., Tacoma, WA - Local Steel Fabricator

- 42 years in operation
- Employs approximately 100 workers during peak fabrication
- The IAF project provided a hiring opportunity to staff up in advance of IAF steel fabrication production
- Located directly on the Tacoma waterfront provides access to transport steel deliveries via the Puget Sound
- Utilizes a local trucking company, V. Van Dyke, Inc., to deliver IAF steel to the Airport using truck and trailers
 - V. Van Dyke is located at the Port of Tacoma
 - Employ 25 workers
 - Own 18 trucks

Safety

- Safety
 - Zero Lost Time/One Recordable in last 90 days
 - Job to Date – Two Lost Time, Nine Recordable Injuries
 - RIR – 1.93, State Average – 6.4, National Average – 3.2
- Design Status
 - BHS 100% TSA approval received 5/15.



CLARK AND PORT HONORING WORKERS



1 YEAR GONE, 45% DONE

1 YEAR AHEAD, 55% TO GO

Current Program Status Update

- IAF
 - Exterior Glass/Metal Panels/Roofing complete
 - Interior rough-in and room buildout/finishes ongoing
 - Terrazzo mock-up and production installation
- Baggage
 - Outbound conveyor installation ongoing
 - Inbound header steel installation ongoing
 - TSA CTX Machines delivered 6/10
 - Pre/Initial FAT 6/10-6/14

Current Program Status Update

- Sterile Corridor
 - Structural Steel Erection completed at Gates A11 and A12 (Pod C)
 - Interior finishes continuing at Pods A and B
- Pedestrian Walkway
 - Concourse A
 - Concrete floors complete
 - V-Pier Steel ongoing
 - SSAT
 - Concrete floors complete
 - V-Pier Steel ongoing
 - S4 opened mid-June
 - Center Span
 - Turned over to follow-on subcontractors
 - Roof and fireproofing underway, Glass and Metal Panels to follow

Current Program Status - Landside



The Landside Grand Hall - End Product



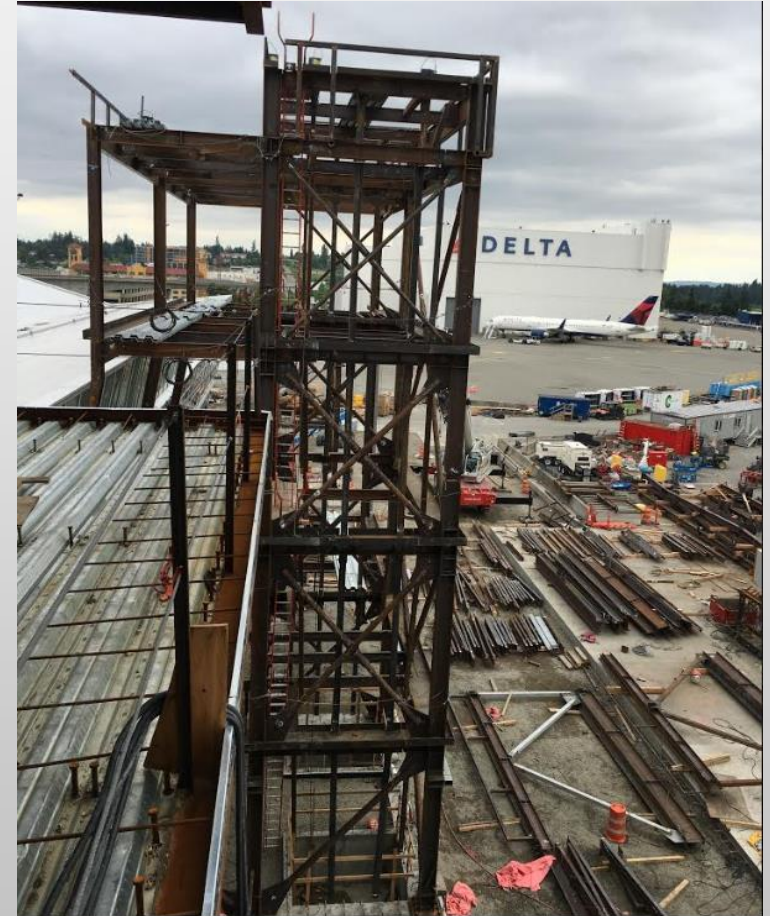
Baggage Handling System Progress



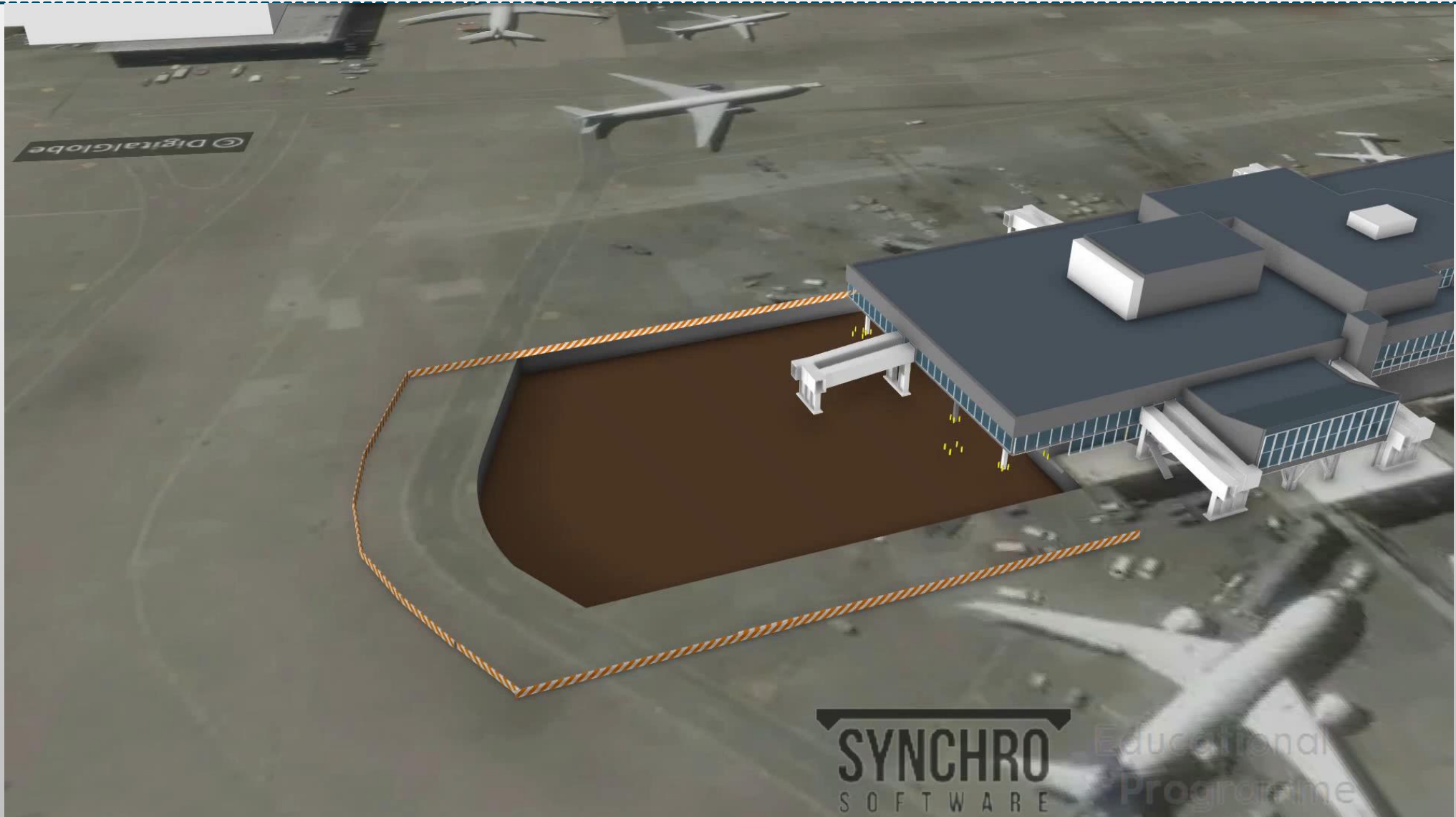
Progress on the IAF – June 10, 2019



Airside Progress



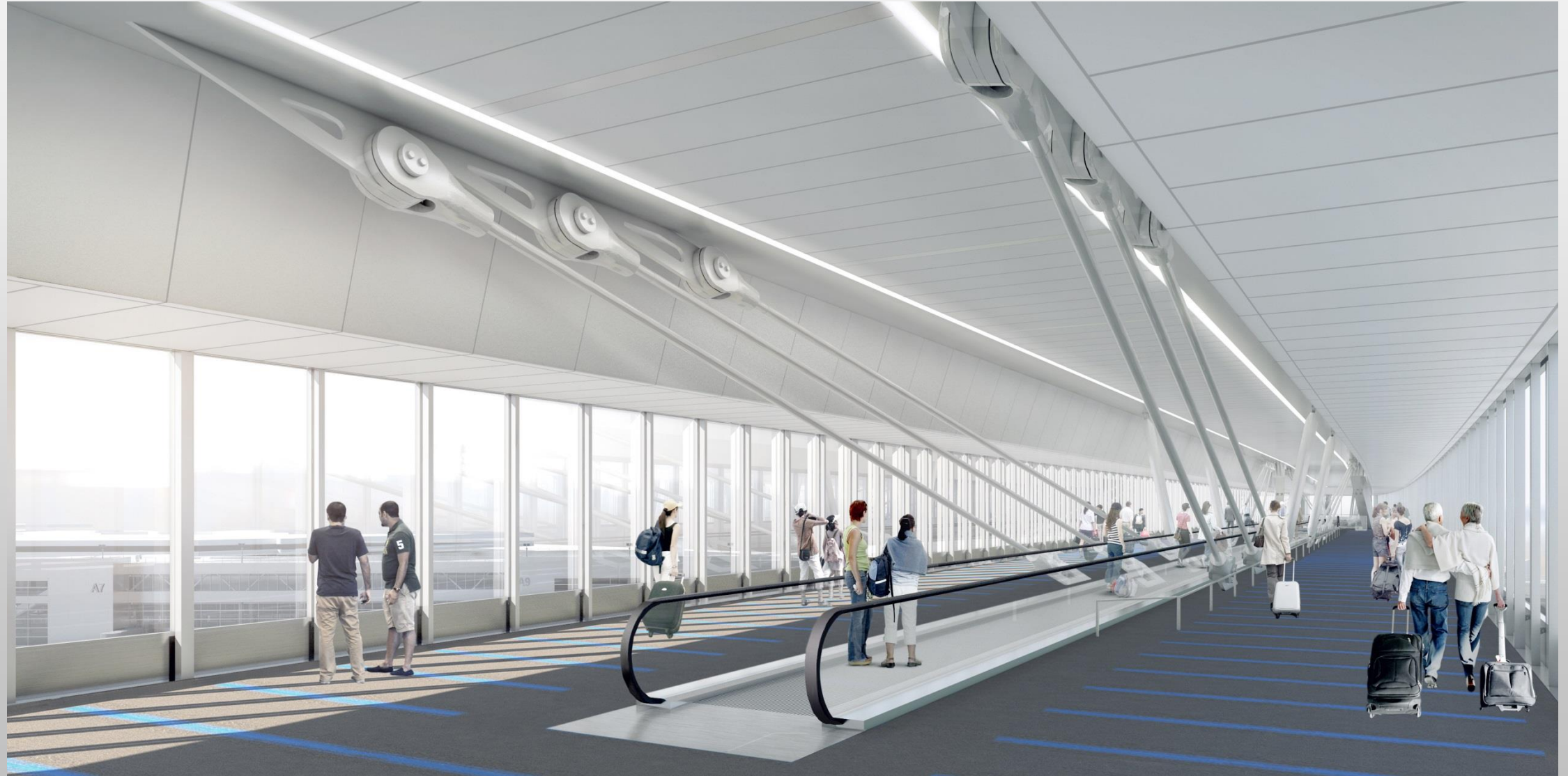
Pedestrian Walkway Progress



Independent Pedestrian Walkway Safety Review

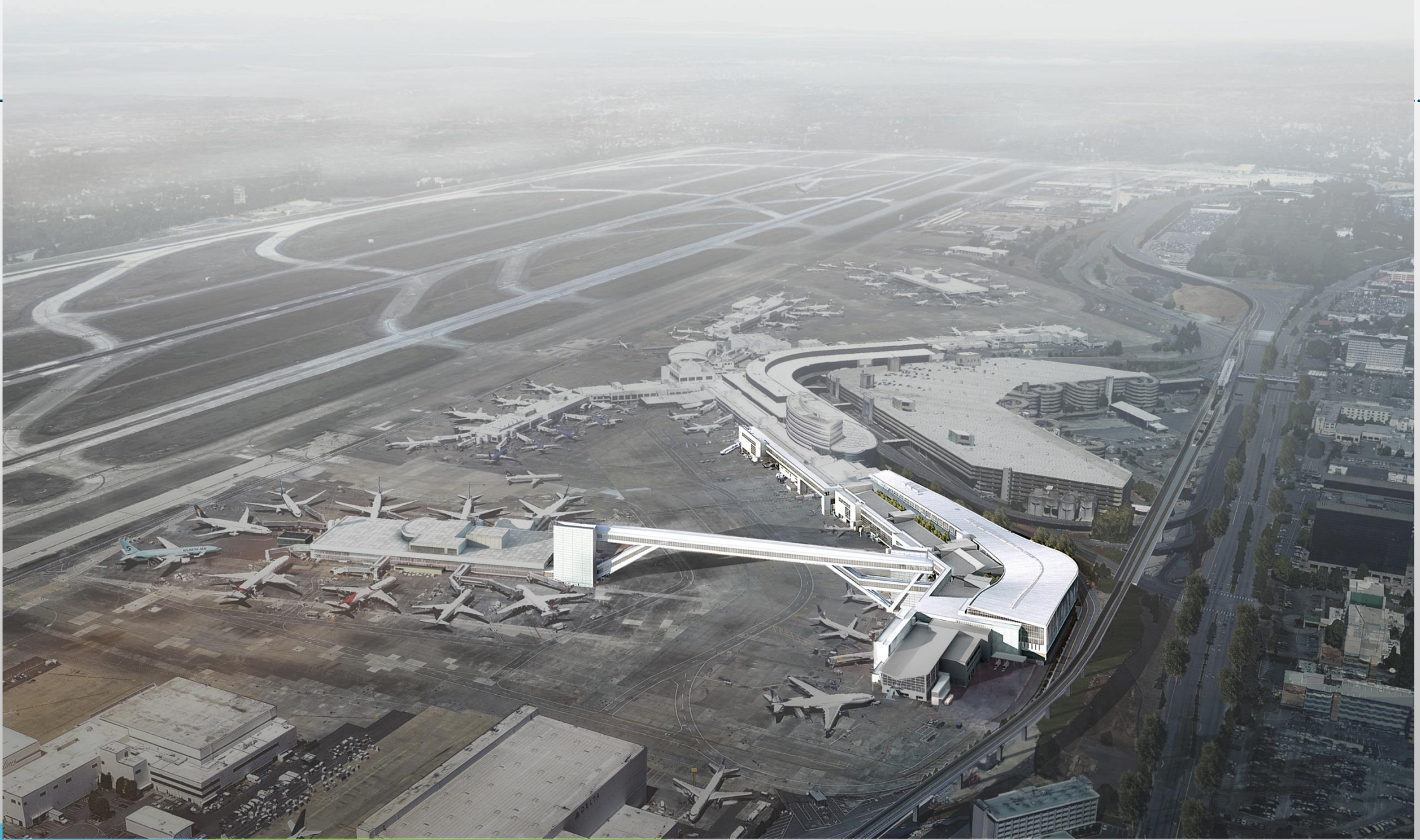


Pedestrian Bridge - End Product



Current Program Challenges

- **CBP Facial Recognition**
- **Structural Steel Deliveries**
- **Availability of Craft Labor Due to Market Conditions**
- **Agency Coordination with Systems**
- **Activation / Turnover**



Questions



APPENDIX

SMALL BUSINESS/APPRENTICESHIP UTILIZATION

March 2015 through April 30, 2019

Small Business	# Firms Engaged	\$ Awarded
W/MBE	33	\$51M
SCS*	25	\$21M
* 19 firms & ~\$19M in the SCS category are also W/MBE		

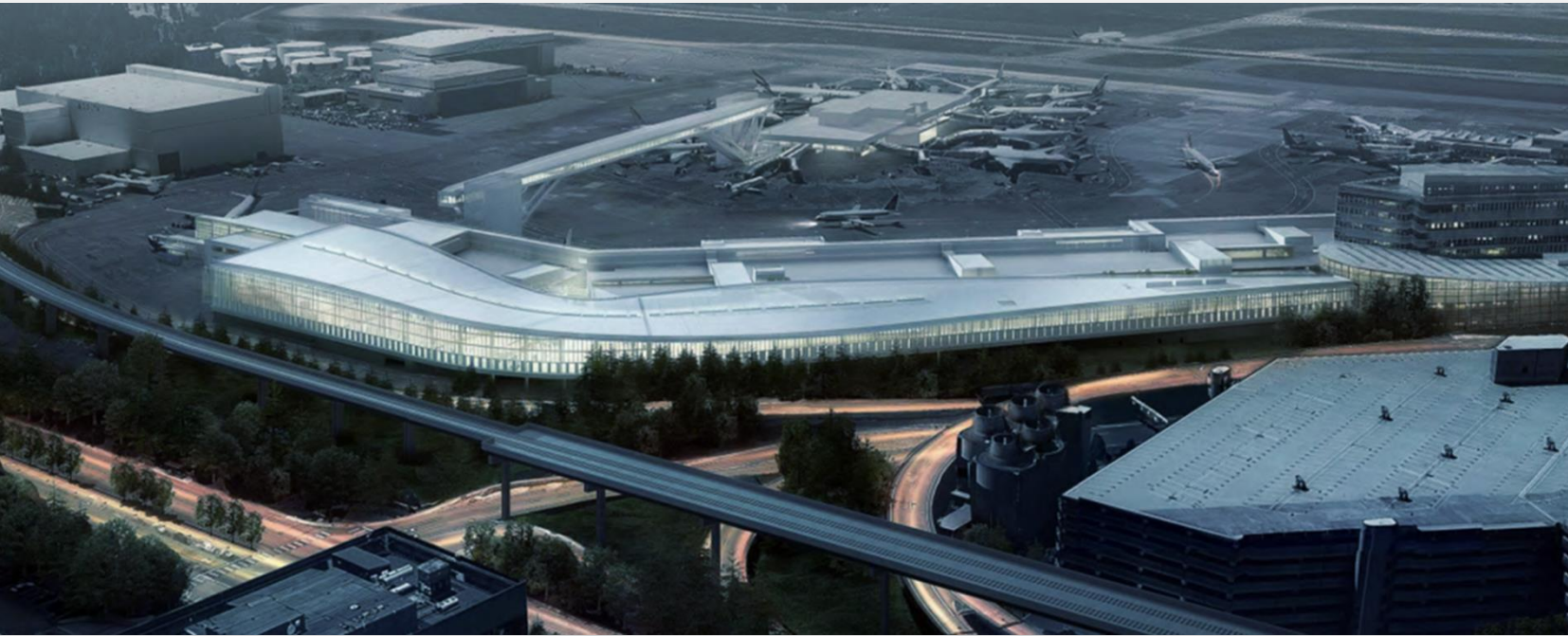
Total Through Month of April 2019

Apprentice Utilization	% of all Labor	Hours Worked
Total Apprentice Hours	19.3%	157,119
Minority	29.2%	236,810
Female	3.8%	30,961

Goals & Benefits

	Before	After	Traveler Benefit
Number of Int'l Gates	12	20	Not held on aircraft
Size	~ 80,000 SF	~ 450,000 SF	Elbow room
Claim Capacity	668 LF	~ 1,800 LF	Less congested
Throughput	1,100 PPH	2,600 PPH	
Airline Recheck	10 counter	8 counter + 5 bag drop	Easier connections
CBP Square Feet	14,275 square feet	77,000 square feet	
CBP Capacity	38 APC, 18 booths	40 podiums	
CBP Consolidation	SSAT & Main Terminal	One Landside location	
TSA Lanes	3 lanes	6 lanes	Faster processing
MCT	90	75	Faster connections

PROJECT OVERVIEW



Landside Arrivals Hall:

- Baggage Claims & System
- Customs & Border Protection
- Airline Recheck
- TSA Checkpoint
- Restrooms

South Satellite:

- Int'l Corridor System
- Refresh of Existing Corridor

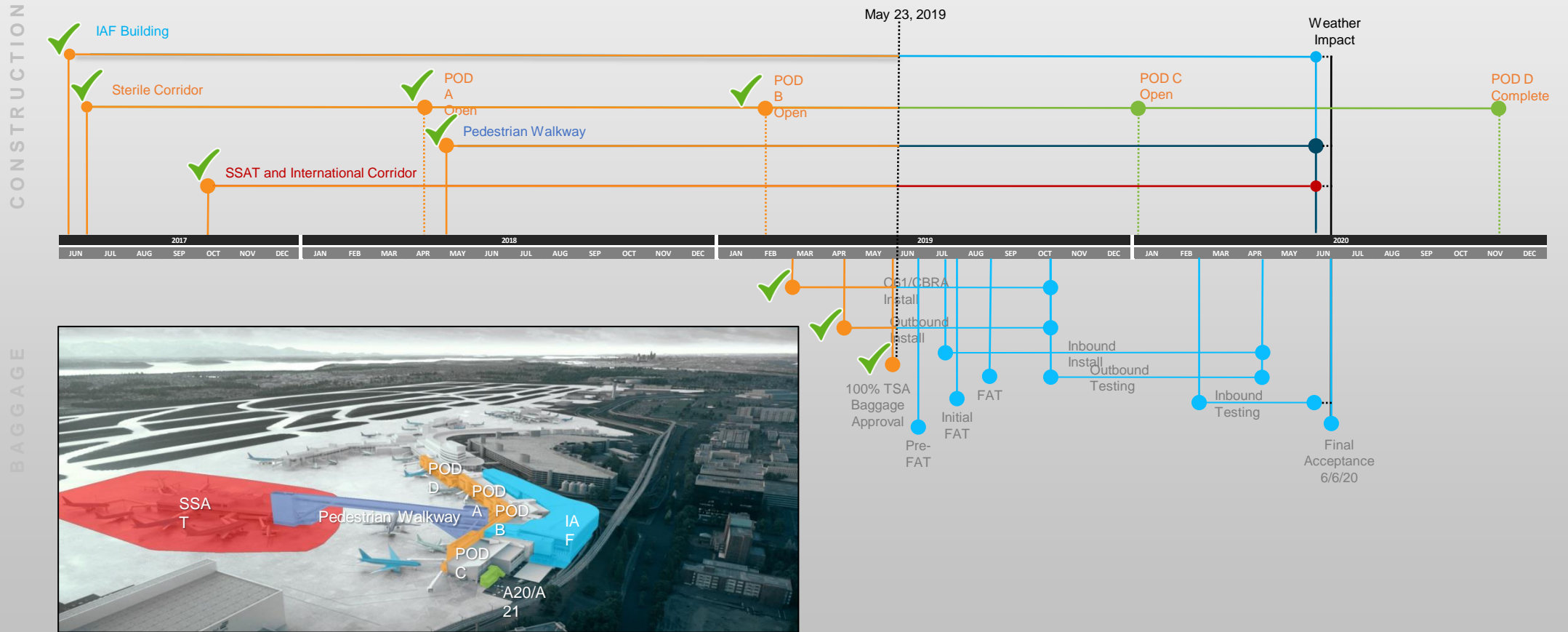
Pedestrian Walkway Overpass:

- Elevator Cores
- Escalators
- Moving Walkway

International Gate Pods A-D:

- 8 gates
- Elevators & Escalators

IAF Program Overview with Baggage Schedule



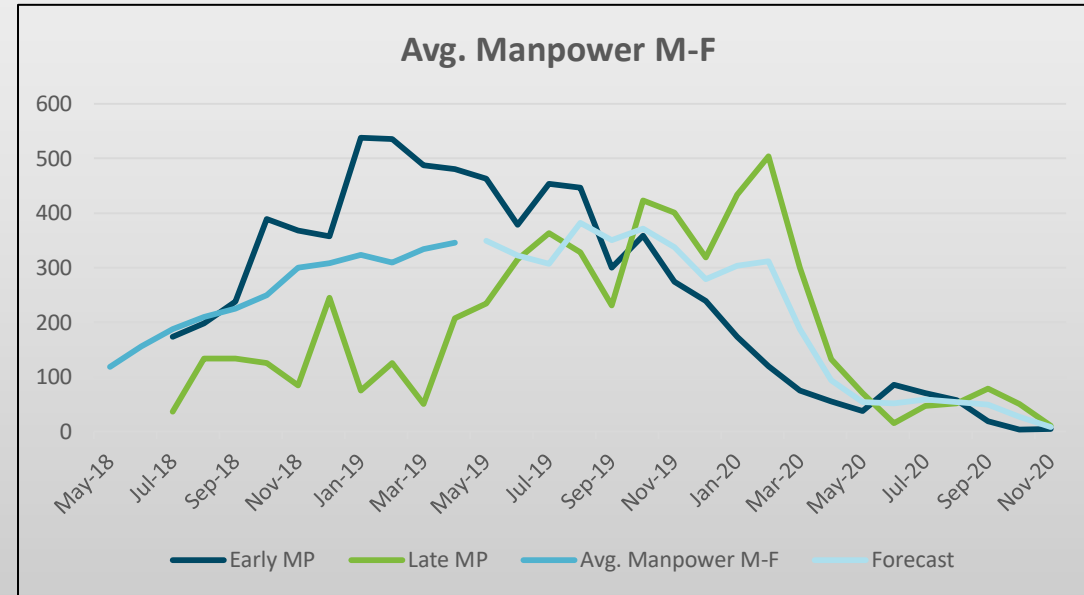
IAF Schedule Update

Phase	GMP Baseline		CURRENT PROJECTED MARCH UPDATE		ACTUAL TO DATE	
	Start	Finish	Start	Finish	Start	Finish
Concrete Foundations	2/14/18	8/14/18	2/14/18	8/14/18	2/14/18	7/31/18
Steel Erection	7/14/18	11/7/18	5/24/18	12/4/18	5/24/18	12/4/18
SOMD / SOG	7/16/18	1/18/19	6/28/18	3/4/19	6/28/18	3/4/19
Envelope	7/26/18	4/30/19	8/30/18	7/22/19	8/30/18	
Rough In	9/6/18	9/23/19	8/28/18	10/16/19	8/28/18	
Finishes	3/8/19	3/9/20	3/25/19	3/24/20	1/31/19	
Start Up & Commissioning	6/13/19	2/14/20	10/24/19	3/6/20		
Baggage	6/19/18	5/30/20	6/19/18	6/5/20*	6/19/18	
Completion of IAF Only		5/30/20		6/5/20*		

**Includes Weather Delays*

Manpower – Average Monday -Friday

Month	Avg. Manpower M-F
May-18	118
Jun-18	156
Jul-18	187
Aug-18	210
Sep-18	225
Oct-18	250
Nov-18	300
Dec-18	308
Jan-19	323
Feb-19	309
Mar-19	334
Apr-19	346



**Weekend Work/Overtime Ongoing*

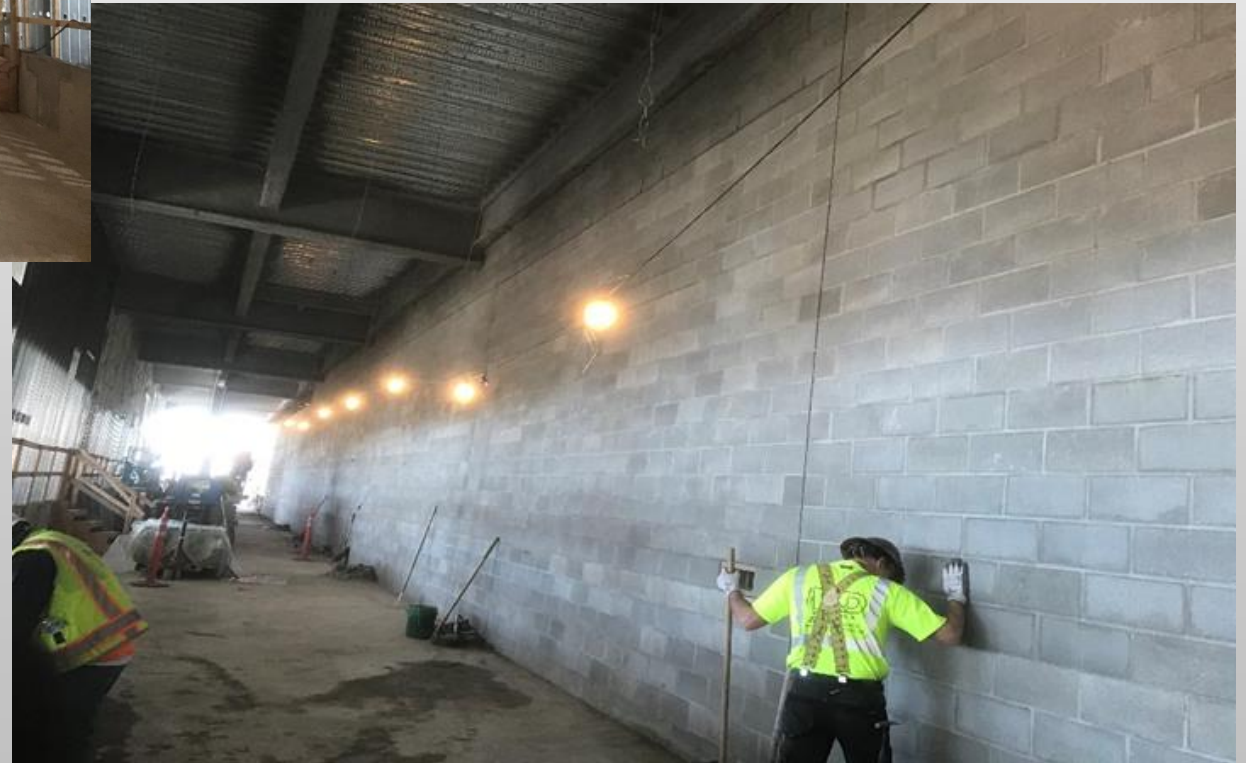
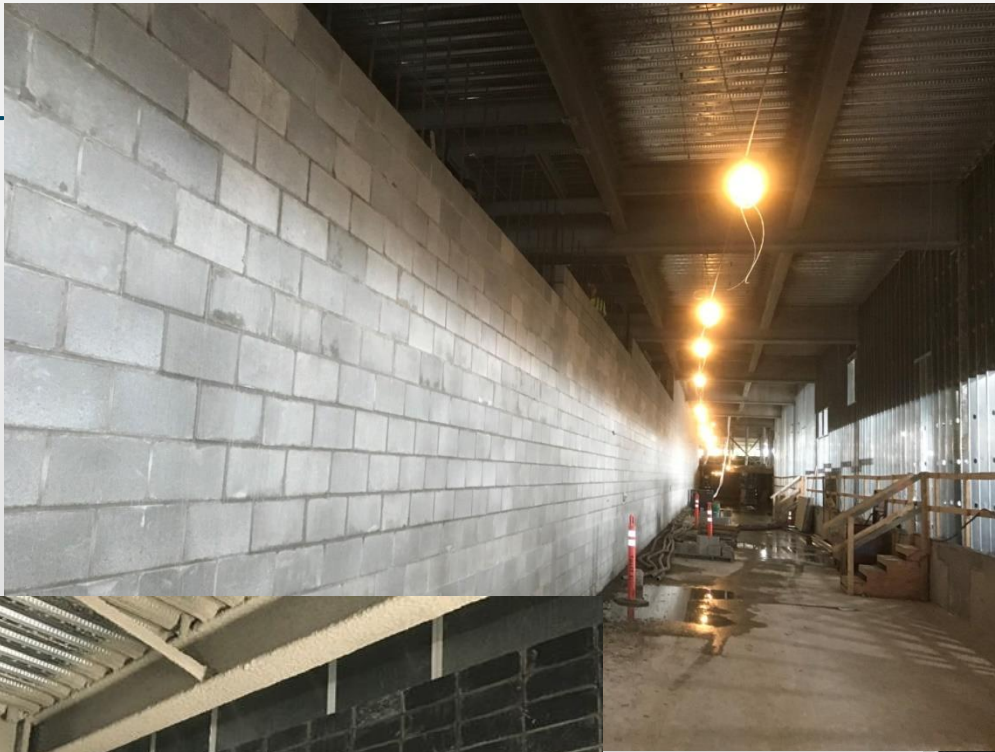




✓ ACCOMPLISHMENT: Completed East IAF Building Curtain Wall



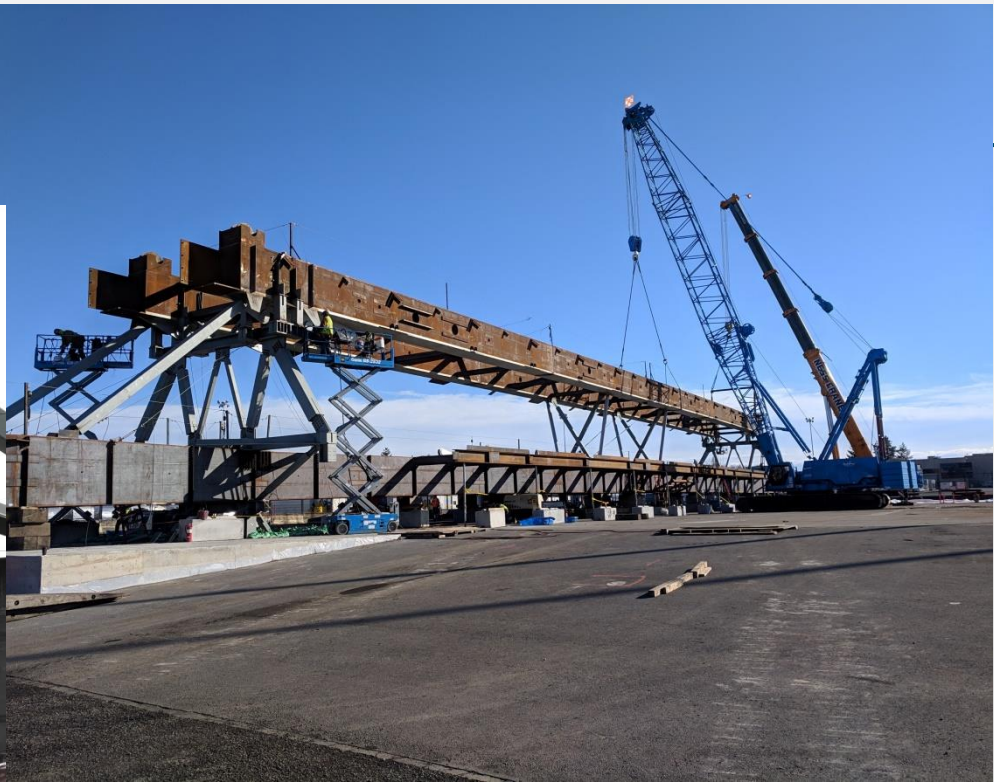
✓ ACCOMPLISHMENT: Completed Main IAF Building Roof

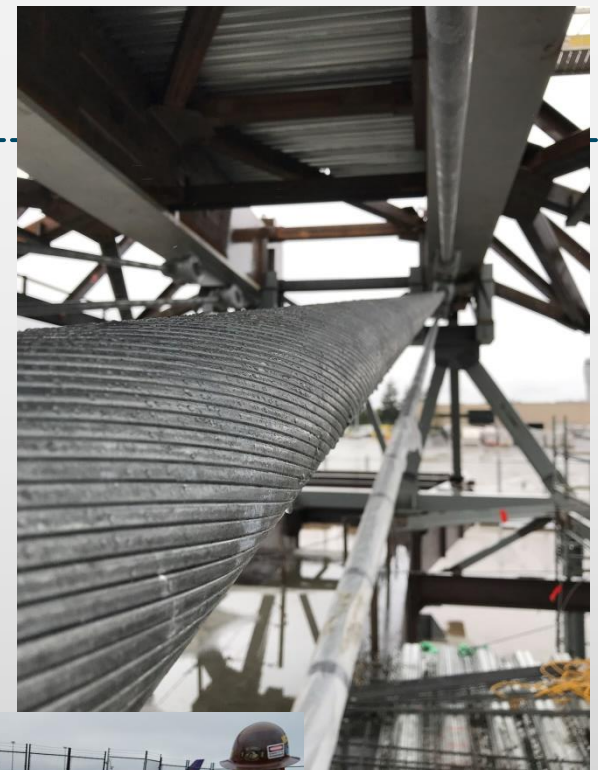


ACCOMPLISHMENT: CMU complete

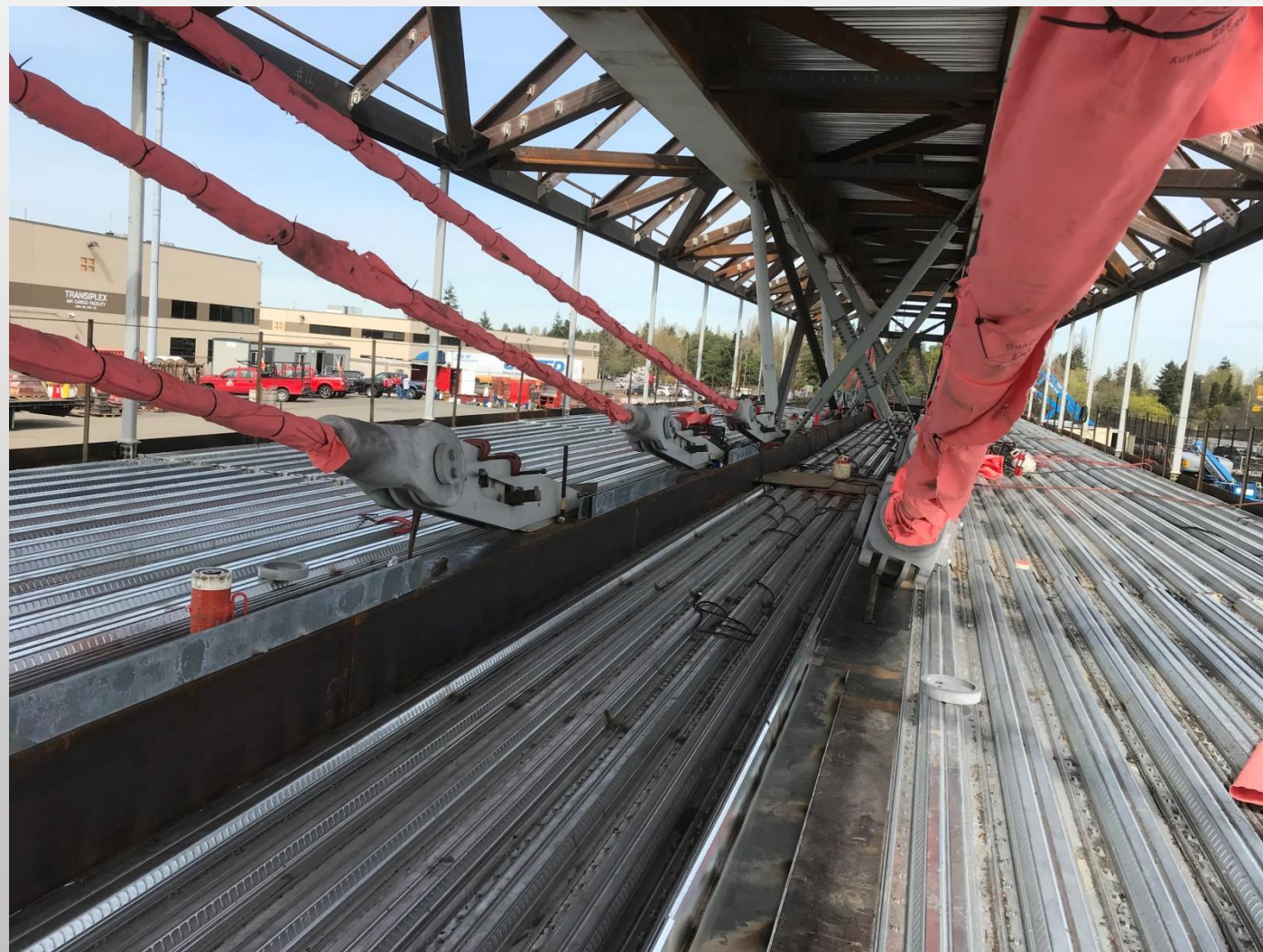
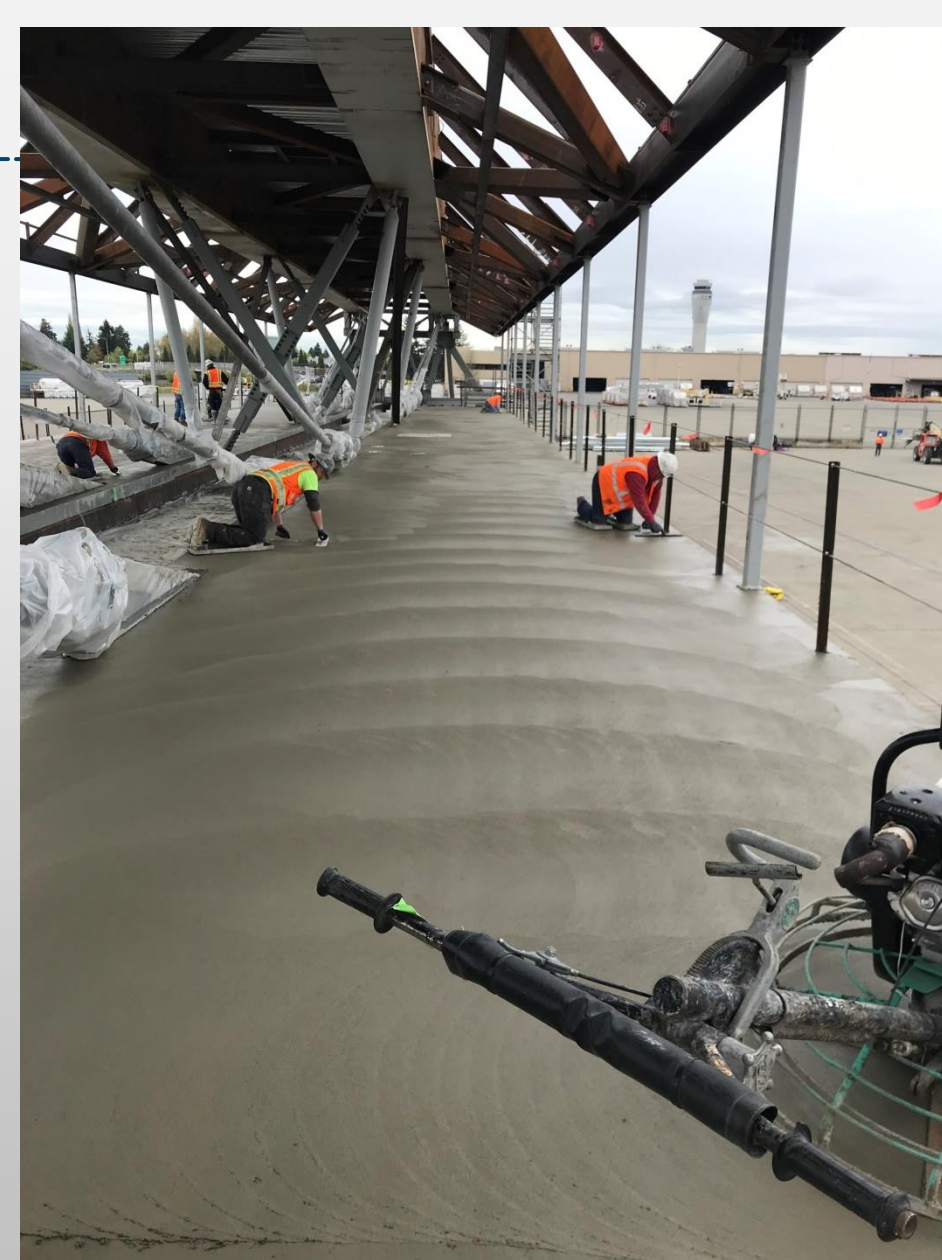








ACCOMPLISHMENTS: Pedestrian Walkway Center Span Cable Installation



PROGRESS: Pedestrian Walkway Center Span Concrete Slab and Travellator Area

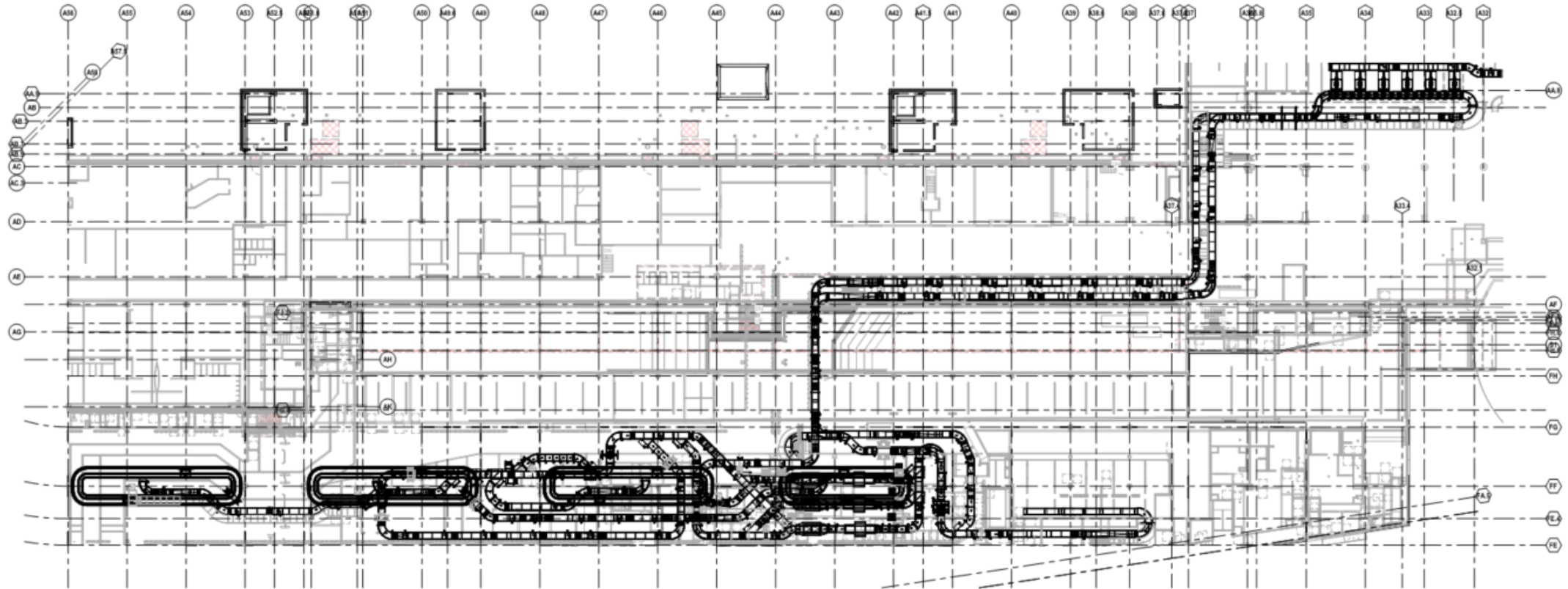




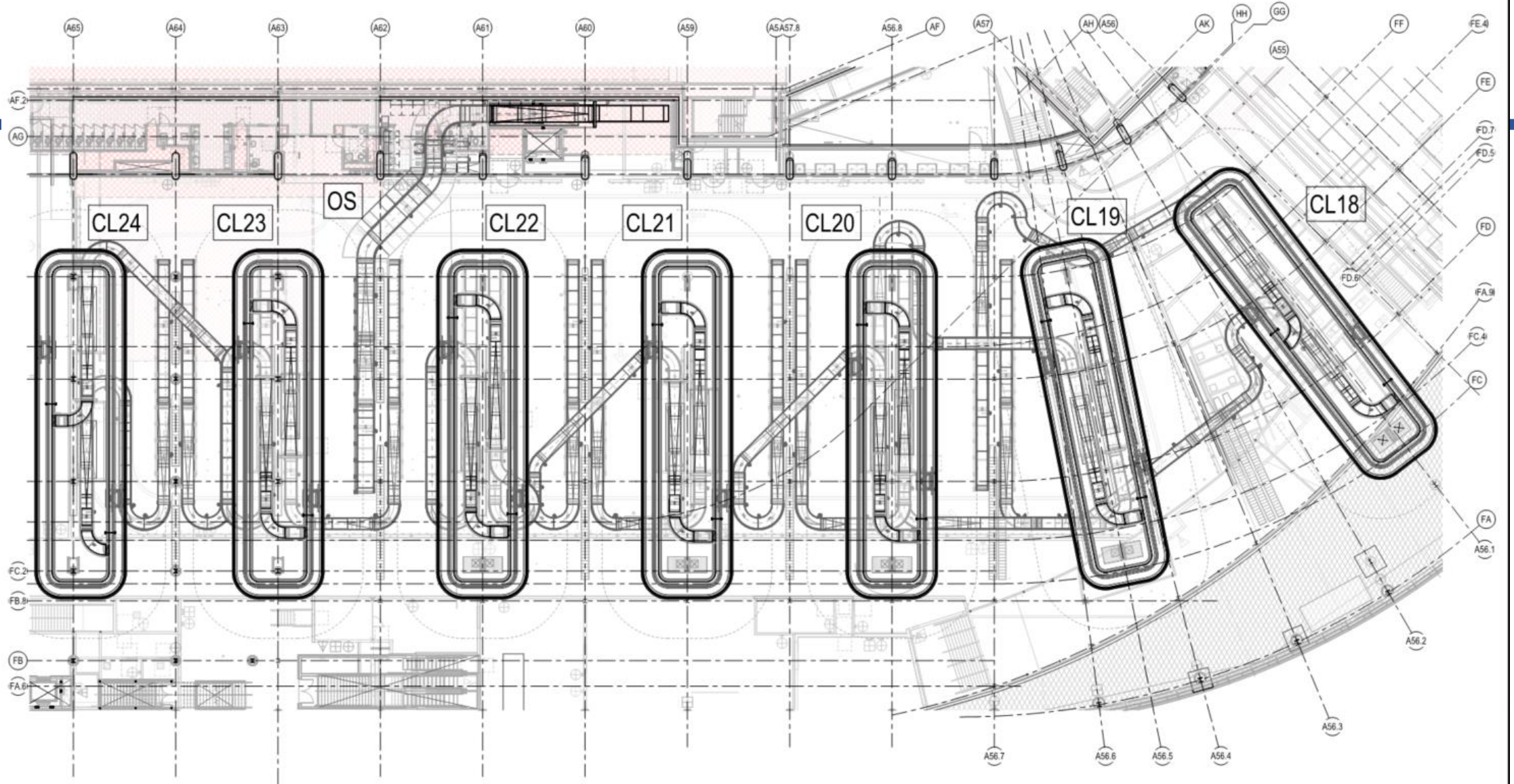


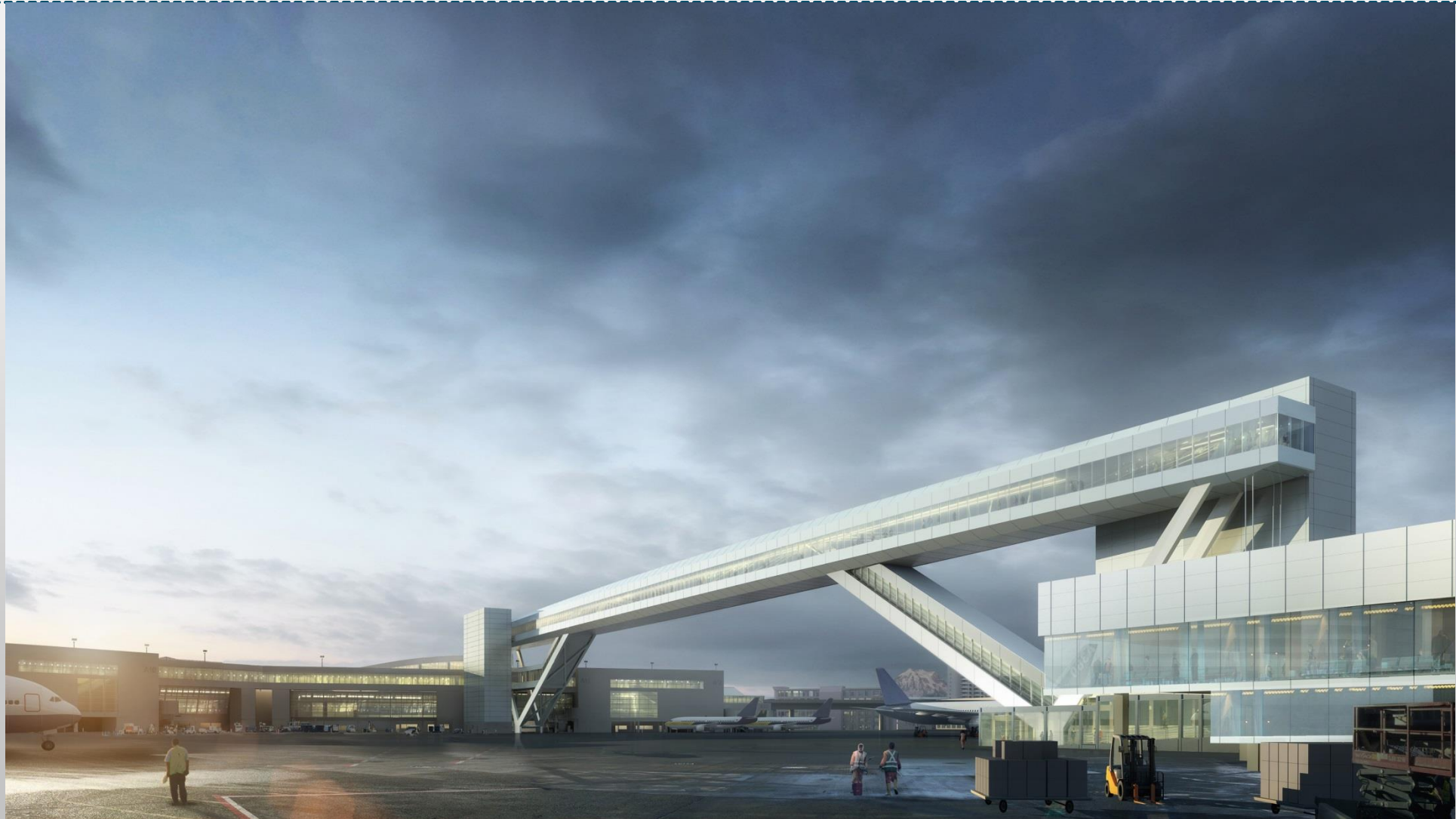
ACCOMPLISHMENT: Pedestrian Walkway V-Pier Steel and Cable Tie Downs Arrival

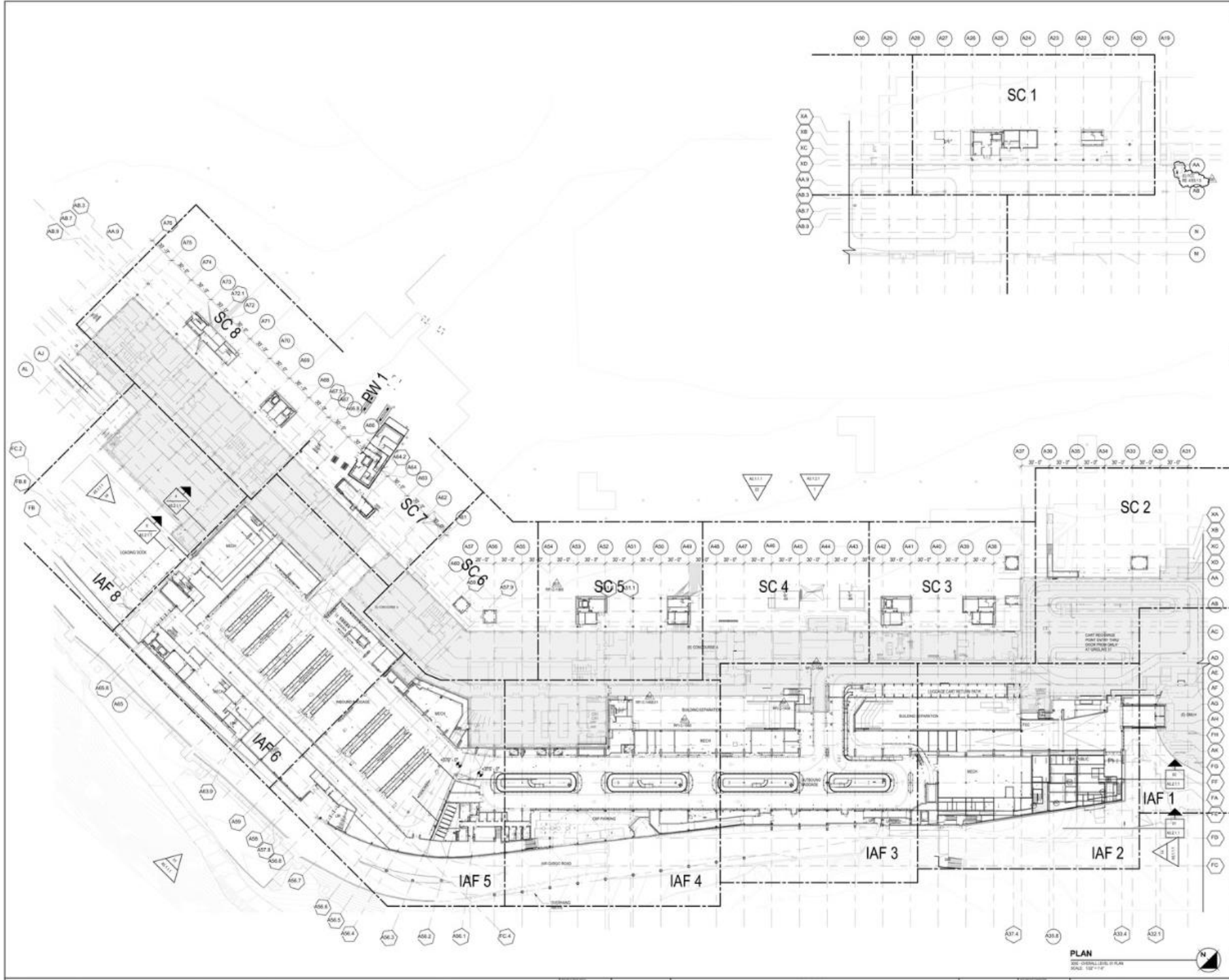
OUTBOUND OVERALL PLAN VIEW



INBOUND OVERALL PLAN VIEW

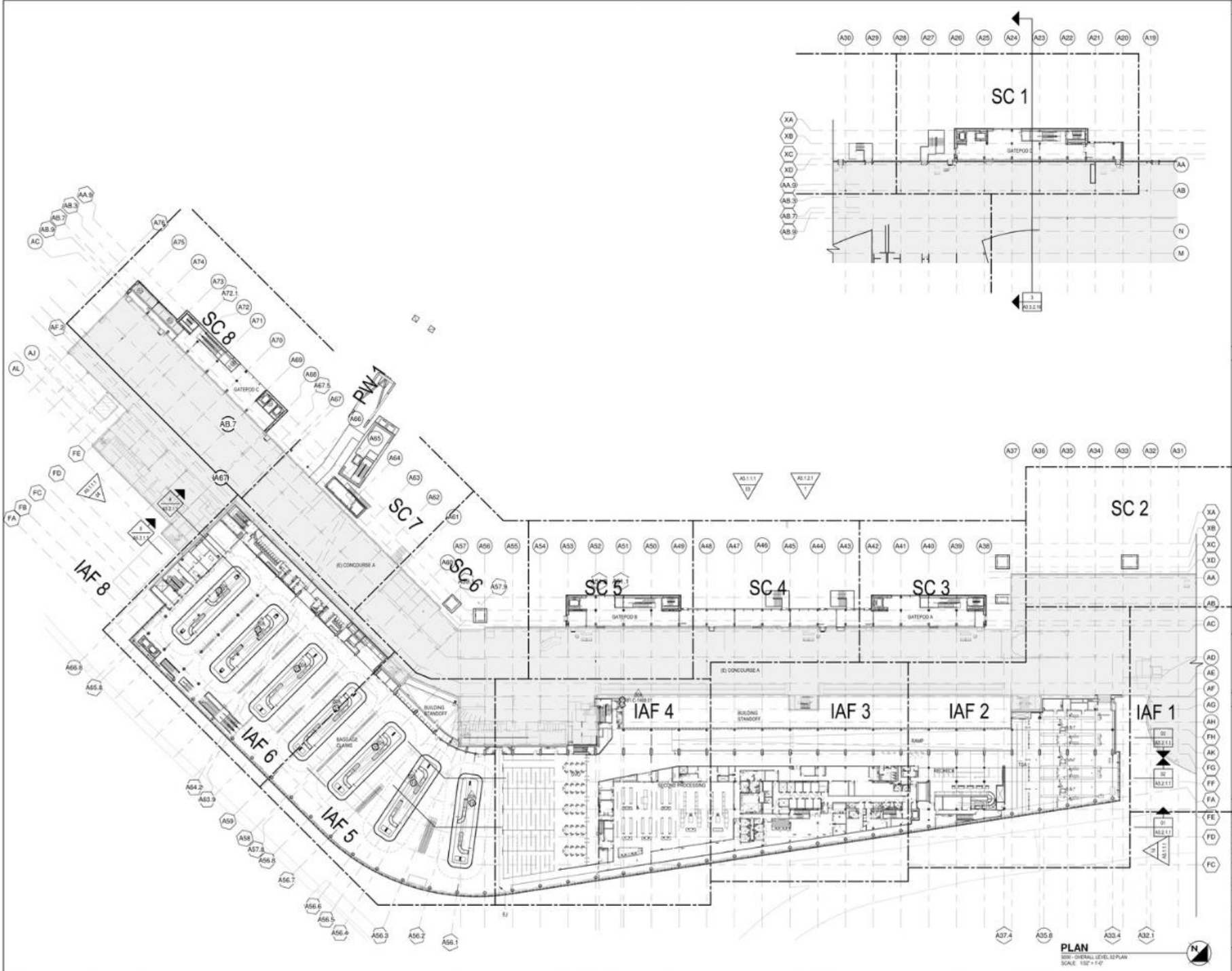


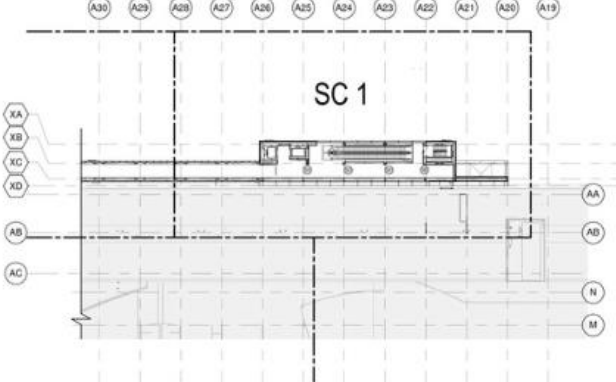
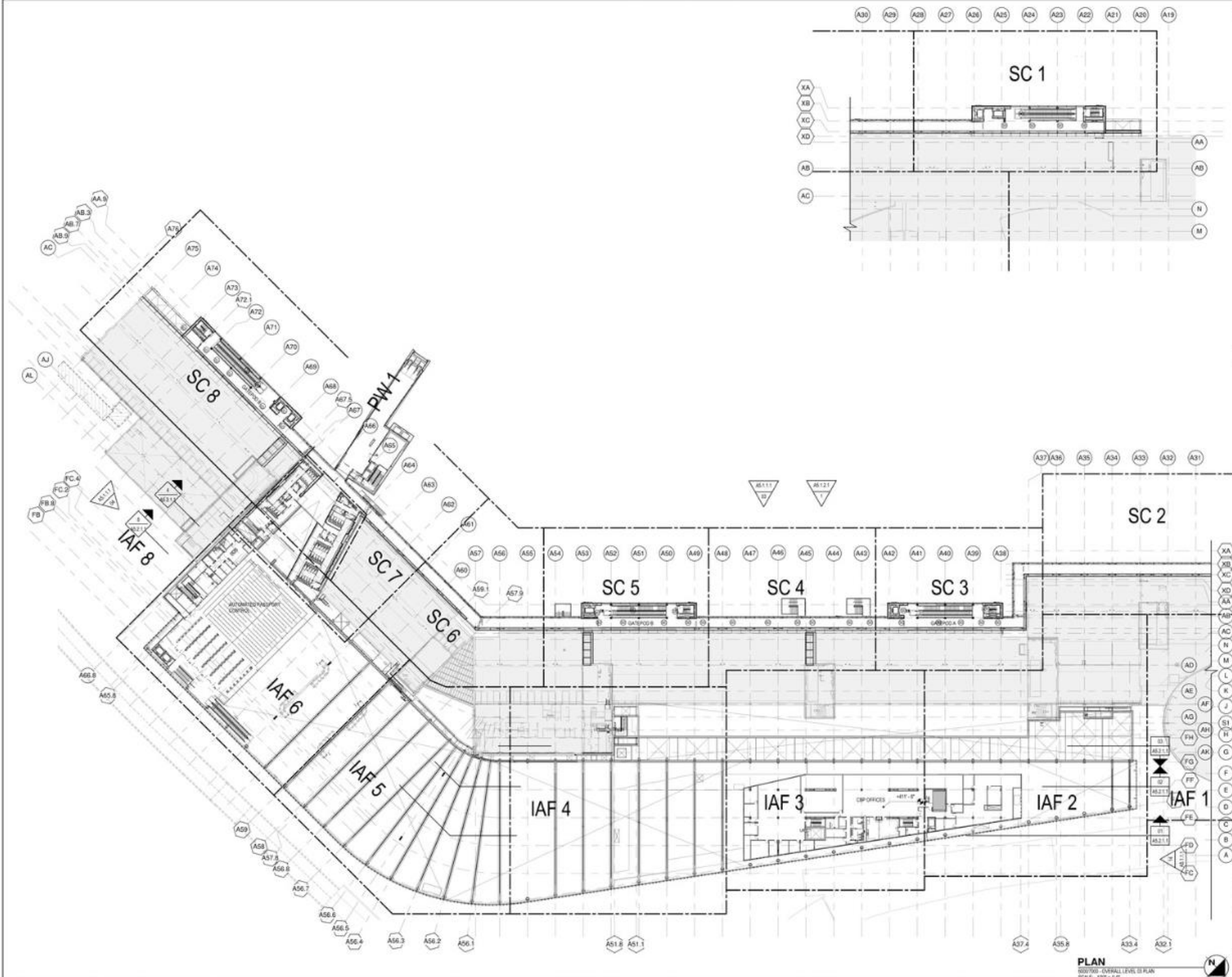




PLAN

SCALE: 1/8" = 1'-0"





SC 2

SC 5

SC 4

SC 3

SC 8

SC 7

SC 6

IAF 8

IAF 6

IAF 5

IAF 4

IAF 3

IAF 2

IAF 1

PW 1

PLAN
 1/8" = 1'-0"
 NORTH